

ASTONCHASE

[astonchase.com](https://www.astonchase.com)

69-71 PARK ROAD
LONDON NW1 6XU
020 7724 4724



CHAPPELL LOFTS
CAMDEN
LONDON, NW1

£3,395 PER WEEK
SUBJECT TO CONTRACT

PRINCIPAL AGENT

Located in the heart of London's vibrant Camden, this 3 bedroom apartment (269 sq m/2,894 sq ft) has been refurbished to a high standard, whilst still retaining its industrial edge.

Set within the Chappell Lofts development, the property further benefits from a spectacular Club Lounge providing residents with a private VIP entertainment venue for relaxation and entertaining. Facilities include a club lounge, bespoke cocktail bar/DJ booth, party/club sound/lighting system; 183 inch cinema screen, swimming pool, spa pool and gymnasium.

ASTONCHASE

astonchase.com

69-71 PARK ROAD
LONDON NW1 6XU
020 7724 4724



ACCOMMODATION

- Principal Bedroom with En-Suite Bathroom & Dressing Room
- One Further Bedroom with En-Suite Bathroom
- Open Plan Reception Room Incorporating Dining Area and Fully Fitted Kitchen
- Study/Bedroom Three
- Guest Bathroom

AMENITIES

- Terrace
- Residents Only Leisure Area Including Swimming Pool and Gymnasium
- Daytime Concierge Service

COUNCIL TAX

Camden (Band H)

EPC RATING:

B

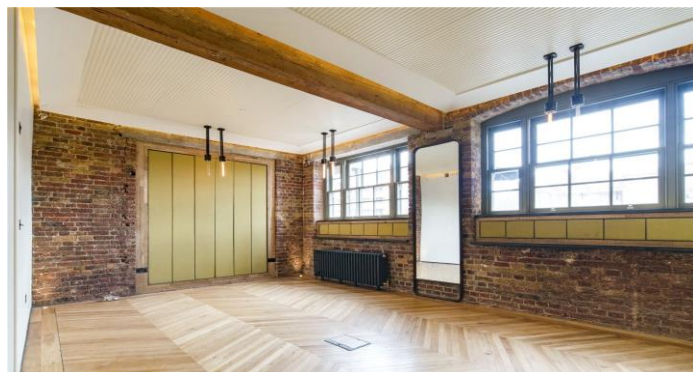
IMPORTANT NOTICE

These particulars have been prepared in all good faith to give a fair overall view of the property and must not be relied upon as statements or representations of fact. Purchasers must satisfy themselves by inspection or otherwise regarding the items mentioned below and as to the content of these particulars. If any points are particularly relevant to your interest in the property ask for further information.

ASTONCHASE

astonchase.com

69-71 PARK ROAD
LONDON NW1 6XU
020 7724 4724



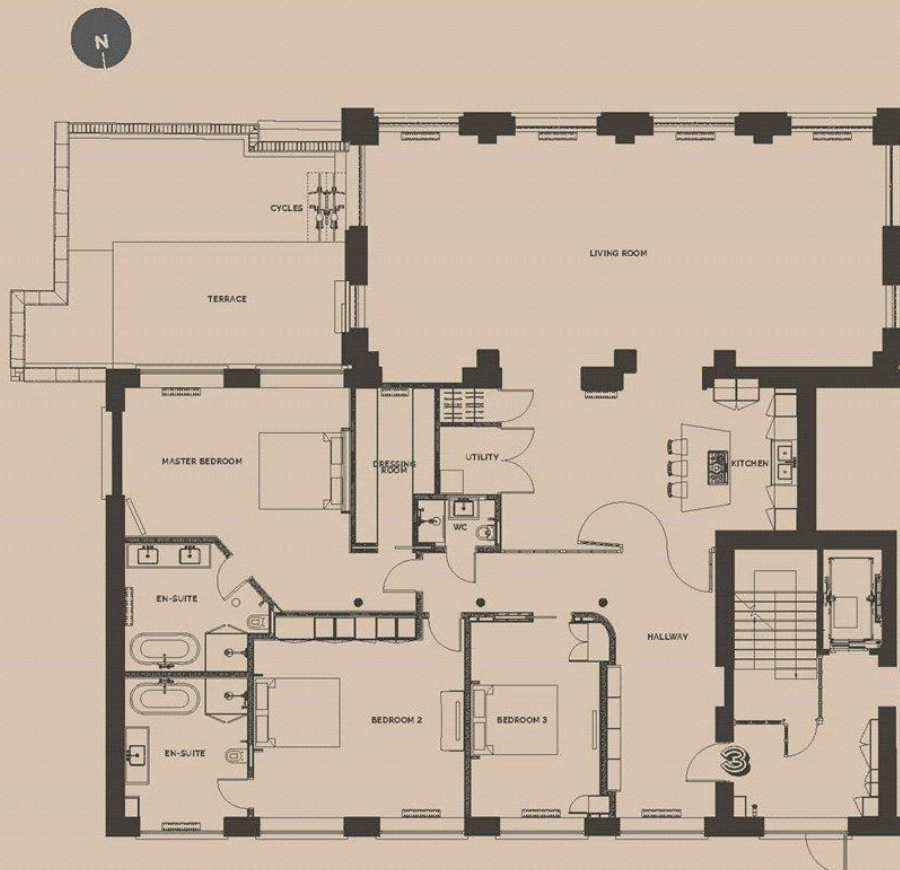
IMPORTANT NOTICE

These particulars have been prepared in all good faith to give a fair overall view of the property and must not be relied upon as statements or representations of fact. Purchasers must satisfy themselves by inspection or otherwise regarding the items mentioned below and as to the content of these particulars. If any points are particularly relevant to your interest in the property ask for further information.

ASTONCHASE

astonchase.com

69-71 PARK ROAD
LONDON NW1 6XU
020 7724 4724



APARTMENT THREE



SECOND FLOOR