

# ASTON CHASE



**BINGHAM PLACE**  
Marylebone, W1U

**ASKING PRICE**  
£2,400 per week

# ASTON CHASE

## BINGHAM PLACE

A stylish duplex 2 bedroom apartment set within a period mews property in the heart of Marylebone Village. This interior designed, contemporary style apartment comprises an open plan living/dining area with fitted kitchen and wood floors. The two double bedrooms have fitted wardrobes and overlook the cobbled mews. Bingham Place is ideally located close to the boutique shops and restaurants of Marylebone and the green open spaces of Regents Park, as well as the extensive shopping and entertainment amenities of London's West End. The nearest underground station is Baker Street.



## ACCOMMODATION

Reception Room, Fully Fitted Kitchen, 2 Bedrooms, 2 Bathrooms



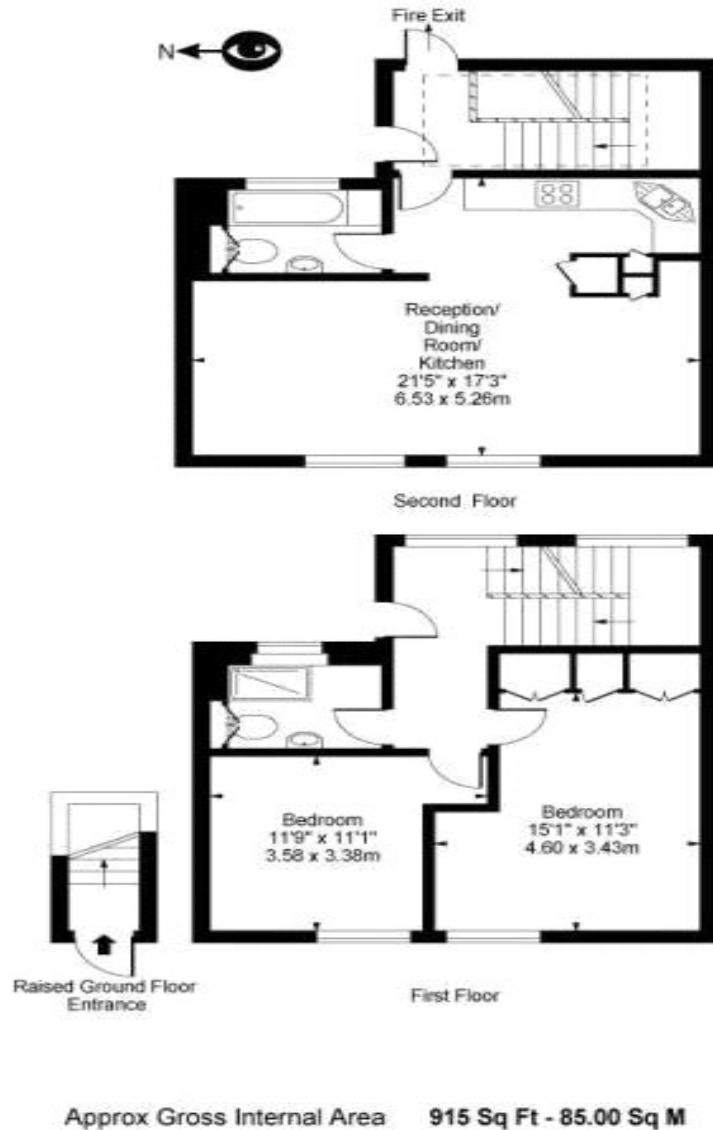
# ASTON CHASE





# ASTON CHASE





## Energy Efficiency Rating

	Current	Potential
Very energy efficient - lower running costs		
(92+) <b>A</b>		
(81-91) <b>B</b>		
(69-80) <b>C</b>	80	83
(55-68) <b>D</b>		
(39-54) <b>E</b>		
(21-38) <b>F</b>		
(1-20) <b>G</b>		
Not energy efficient - higher running costs		
England, Scotland & Wales	EU Directive 2002/91/EC	

## IMPORTANT NOTICE

These particulars are a guide given in good faith and are believed to be correct at the time of printing. Aston Chase give no representation as to their accuracy and potential purchasers or tenants must satisfy themselves by inspection or otherwise as to their correctness. No employee of Aston Chase has authority to make or give any representation or warranty in relation to this property.