

ASTON CHASE



ALDERSIDE APARTMENTS

Salisbury Road, Queens Park, NW6

ASKING PRICE

£750 per week

ASTON CHASE

ALDERSIDE APARTMENTS

Situated in the heart of Queens Park is this stunning, south facing two bedroom apartment (79 sq. m/849 sq. ft) set on the fourth floor of this landmark development in NW6. The apartment is presented to the highest standard and benefits from two double bedrooms, two bathrooms (one en-suite), an open plan kitchen/reception room, a large south facing roof terrace (51.9sq.m / 559sq ft) and secure underground parking for one car.

Queen's Park, an urban village in North West London, is one of the capital's better kept secrets. Just 7 minutes to Paddington and 15 minutes to Oxford Circus by direct Underground line, the area has a bustling High Street and an historic 30-acre park named in honour of Queen Victoria's Golden Jubilee. The vibrant community spirit is evident in the eclectic shops, park, gastropubs, restaurants and especially in the weekly farmers' market, voted the best in the UK.

ACCOMMODATION

Two Double Bedrooms

Two Bathrooms

Open Plan Kitchen/Reception Room

Balcony

Off Street Parking For One Car

AMENITIES

24 Hour Concierge

Bike Storage

Communal Gardens



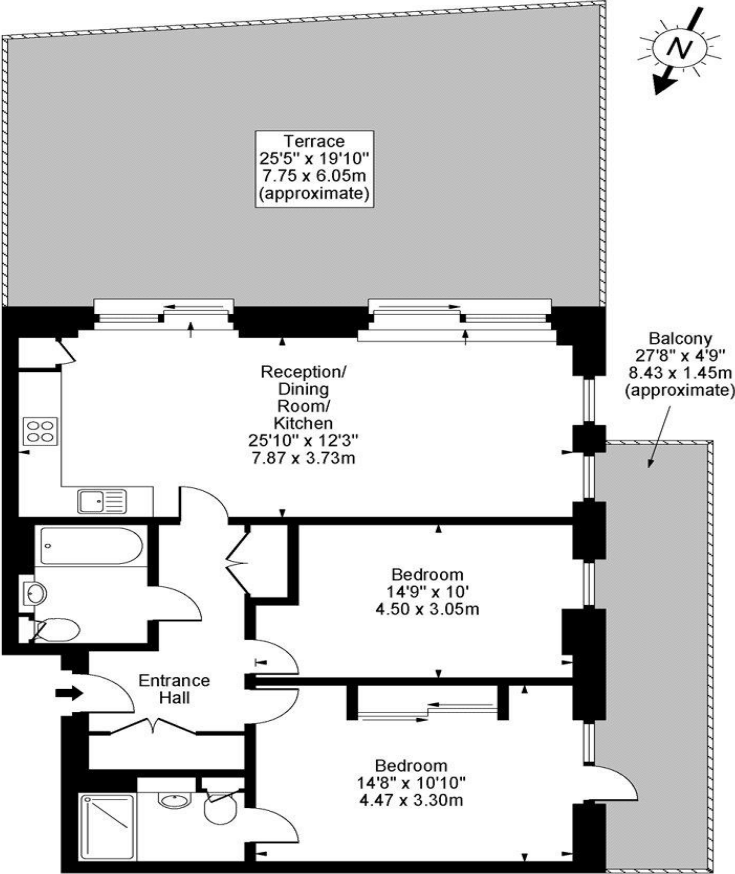
ASTON CHASE



ASTON CHASE

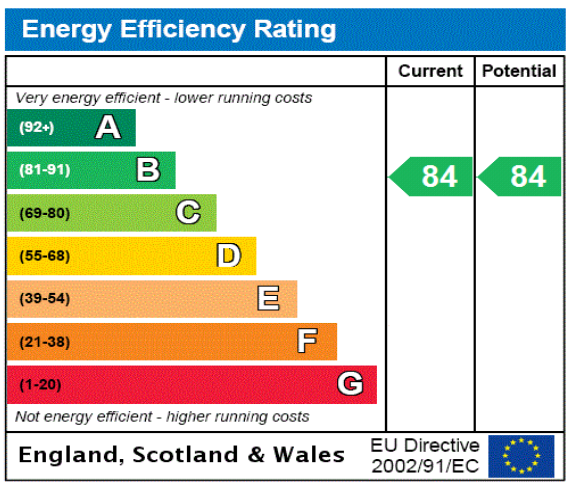


Alderside Apartments,
Salisbury Road, NW6 6BF



Fifth Floor
Approx Gross Internal Area **865 Sq Ft - 80.36 Sq M**

For Illustration Purposes Only - Not To Scale
www.goldlens.co.uk
Ref. No. 004188K



67-71 Park Road
Regent's Park
London NW1 6XU

020 7724 4724
astonchase.com



IMPORTANT NOTICE

These particulars are a guide given in good faith and are believed to be correct at the time of printing. Aston Chase give no representation as to their accuracy and potential purchasers or tenants must satisfy themselves by inspection or otherwise as to their correctness. No employee of Aston Chase has authority to make or give any representation or warranty in relation to this property.