

ASTONCHASE

astonchase.com

69-71 PARK ROAD
LONDON NW1 6XU
020 7724 4724



ST JOHN'S WOOD TERRACE
ST JOHN'S WOOD
LONDON
NW8 6JL

£3,600 PER WEEK
SUBJECT TO CONTRACT

JOINT SOLE AGENT

A period terraced house recently refurbished to a high standard in a contemporary style whilst retaining original period features. The property is decorated and designed to maximize space and light.

Ideally situated for the shops, cafes and Underground Station of St Johns Wood (Jubilee Line) and within close proximity of The American School in London.

ASTONCHASE

astonchase.com

69-71 PARK ROAD
LONDON NW1 6XU
020 7724 4724



ACCOMMODATION

- Principal Bedroom with En-Suite Bathroom
- Three Further Bedrooms
- Two Further Bathrooms
- Split Level Reception Room and Dining Room
- Kitchen / Breakfast Room
- Guest Cloakroom

AMENITIES

- Landscaped Front & Rear Gardens

COUNCIL TAX

Westminster Band H

EPC RATING:

E

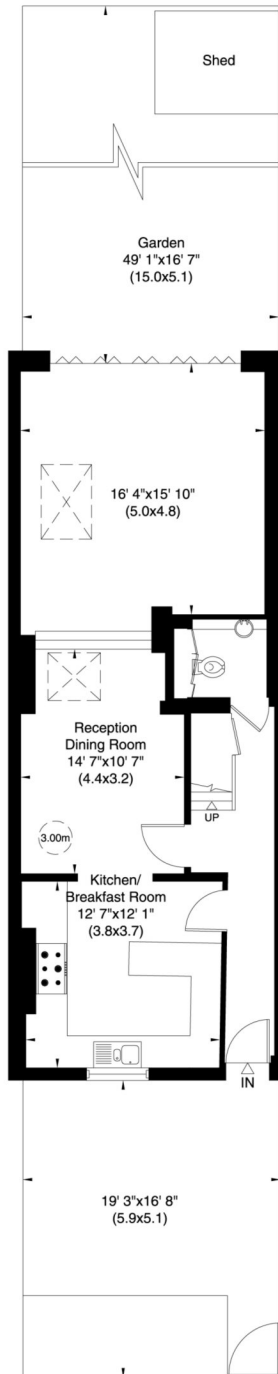
St Johns Wood Terrace, NW8

Gross internal area (approx.)

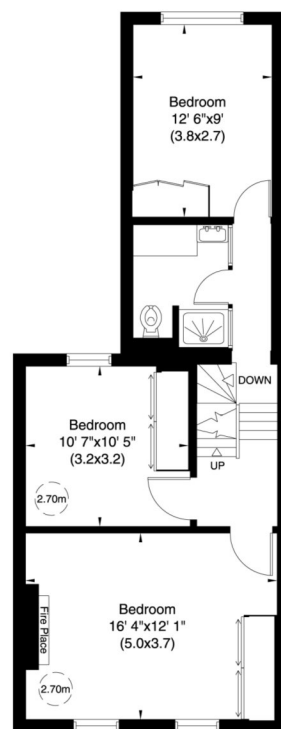
163 Sq m (1756 Sq ft)

For identification only, Not to Scale

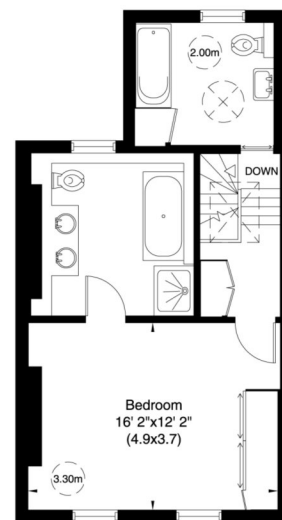
Floor Plan by **capital group** 020 8671 7722



Ground Floor



First Floor



Second Floor

Not to scale, for guidance only and must not be relied upon as a statement of fact. All measurements and areas are approximate only (and have been prepared in accordance with the current edition of the RICS Code of Measuring Practice).

Energy Efficiency Rating		
	Current	Potential
Very energy efficient - lower running costs		
(92+) A		
(81-91) B		
(69-80) C		
(55-68) D		
(39-54) E		
(21-38) F		
(1-20) G		
Not energy efficient - higher running costs		
	53	65
England, Scotland & Wales	EU Directive 2002/91/EC	

IMPORTANT NOTICE

These particulars have been prepared in all good faith to give a fair overall view of the property and must not be relied upon as statements or representations of fact. Purchasers must satisfy themselves by inspection or otherwise regarding the items mentioned below and as to the content of these particulars. If any points are particularly relevant to your interest in the property ask for further information.